

HO KKAIDO
Experience makes technology

KAITEKI

MONOSPLIT R32

www.hokkaido.it

SIMPLE COMFORT AND QUIET

KAITEKI is a silent heat pump air conditioner that offers the utmost comfort in all seasons.

Freely and intuitively control the air flow, directing the air distribution louvers horizontally and vertically. The system remembers the last setting made when the air conditioner is switched back on.

ONLY 22 dB | very quiet operation (mod. 2.60/3.40 kW).

22

decibels in ULow mode

LOW CONSUMPTION

Thanks to its cooling and heating mode operation, KAITEKI meets all your needs with simplicity and efficiency in A++ and A+ class.

A++

in cooling

A+

in heating

EXTREMELY HIGH PERFORMANCE UNDER EXTREME CONDITIONS

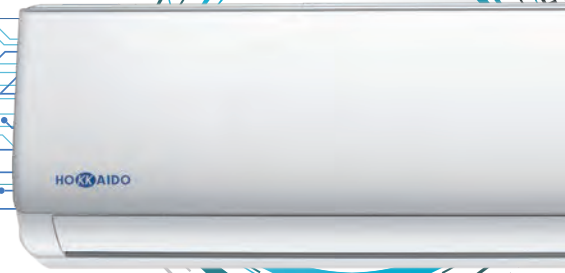
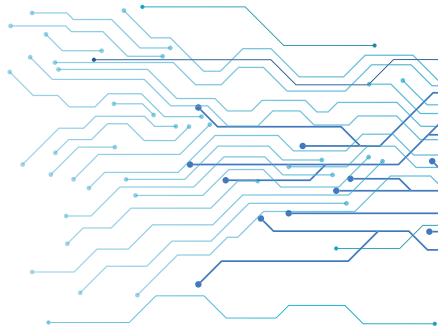
53°C

KAITEKI cools up to 53°C outside



-20°C

KAITEKI heats up to -20°C outside



TURBO FUNCTION

Helps reach the temperature you want quickly at start-up.

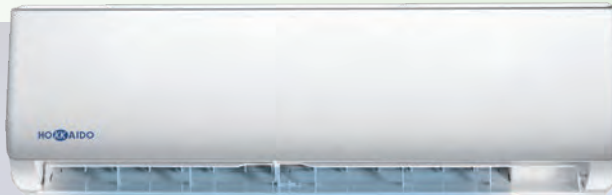
Bluefin treatment

Heat exchanger efficiency is protected from the aggression of external elements, such as salty air in maritime areas.

Bluefin treatment increases corrosion resistance and protects against UV radiation.



QUALITY THAT LASTS



THE TEMPERATURE YOU WANT, WHERE YOU WANT IT

I-Feel function in the remote control

Detects the room temperature from the remote control, thus enabling the desired climate to be reached at a specific point in the room, quickly and with the utmost comfort.



KAITEKI

MONOSPLIT R32



Standard remote control
with built-in temperature sensor
(I-Feel function)



HKETM 260-710 ZAL



HCNTS 260-350 ZA



HCNTS 530 ZA



HCNTS 710 ZA

Indoor unit model			HKETM 260 ZAL	HKETM 350 ZAL	HKETM 530 ZAL	HKETM 710 ZAL	
Outdoor unit model			HCNTS 260 ZA	HCNTS 350 ZA	HCNTS 530 ZA	HCNTS 710 ZA	
Rated capacity (T=+35°C)	Cooling	kW	2.60 (0.94~3.35)	3.40 (1.00~3.77)	5.10 (1.25~5.90)	6.81 (1.83~7.80)	
		kW	0.79 (0.24~1.38)	1.13 (0.29~1.50)	1.58 (0.33~2.35)	2.26 (0.41~2.82)	
		EER ³	3.30	3.01	3.23	3.02	
		626/2011 ¹ / SEER ²	A++ / 6.3	A++ / 6.1	A++ / 6.1	A++ / 6.1	
Rated capacity (T=+7°C)	Heating	kW	2.75 (0.94~3.38)	3.42 (1.00~3.81)	5.13 (1.25~6.08)	6.87 (1.85~7.90)	
		kW	0.73 (0.24~1.55)	0.92 (0.29~1.72)	1.38 (0.34~2.54)	2.06 (0.42~3.01)	
		COP ³	3.75	3.71	3.71	3.33	
		626/2011 ¹ / SCOP ²	A+ / 4.0	A+ / 4.0	A+ / 4.0	A+ / 4.0	
Operating limits (outside temperature) Cooling / Heating		°C	-15~53 / -20~30				
GWP ⁴ / Kg refrigerant pre-load / tCO ₂ EQ.			675 / 0.55 / 0.371	675 / 0.55 / 0.371	675 / 0.92 / 0.621	675 / 1.14 / 0.770	
Diameter of refrigerant piping on liquid/gas		mm (inches)	ø6.35(1/4") - ø9.52(3/8")	ø6.35(1/4") - ø9.52(3/8")	ø6.35(1/4") - ø9.52(3/8")	ø6.35(1/4") - ø12.74(1/2")	
Max splitting length		m	25	25	25	25	
Max height difference !.U./O.U.		m	10	10	10	10	
Split length without additional charge		m	5	5	5	5	
Additional load		g/m	15	15	25	25	
Indoor units specifications							
Dimensions / Net weight		mm (LxDxH) / kg	777x201x250 / 8	777x201x250 / 8	910x206x294 / 10	1010x220x315 / 13	
Sound pressure level (I.U.)		SHi/Hi/Mi/Lo/U/Lo	dB(A)	40/37/33/25/22	40/37/33/25/22	43/41/38/35/27	44/41/38/34/30
Sound power level (I.U.)		Hi	dB(A)	50	50	53	54
Outdoor units specifications							
Dimensions		mm (LxDxH)	mm	777x290x498	777x290x498	853x349x602	920x380x699
Net weight		Kg	24	24	35	40	
Sound pressure level (O.U.) / Sound power level (O.U.)		dB(A)	50 / 60	50 / 60	55 / 65	57 / 67	

1. 2. 3. 4. Please refer to the Hokkaido general catalogue for regulations.

HOKKAIDO



09-2021:

HOKKAIDO srl Ph. +39 051 4133 111
Via della Salute 14 Fax +39 051 4133 146
40132 Bologna Italy **www.hokkaido.it**