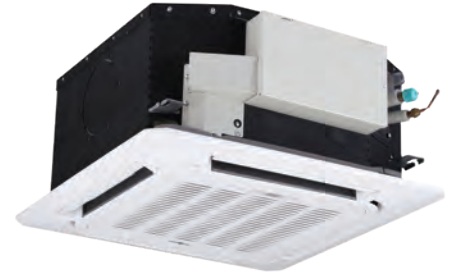


# HTFU XRV-P

## 8-way compact cassette 60x60



Ultra-compact design  
**22 dB(A)** (2.20-2.80 kW)  
high silence

Condensate drainage pump with  
the possibility of raising the drain  
up to 500 mm from the lower level

360° air diffusion  
**The controller must be purchased  
as an accessory**

Model			HTFU 225 XRV-P	HTFU 285 XRV-P	HTFU 365 XRV-P	HTFU 455 XRV-P
Rated capacity	Cooling	kW	2.20	2.80	3.60	4.50
	Heating	kW	2.40	3.20	4.00	5.00
<b>Electrical data</b>						
Power supply		Ph-V-Hz	1-220~240V-50Hz			
Absorbed power		W	35	35	40	50
<b>Product specifications</b>						
Dimensions		LxHxD	630x260x570			
Net weight		Kg	18			19.2
Sound power level <sup>1</sup>	Max~Min	dB(A)	51~38			56~43
	Sound pressure level at 1.4 m <sup>1</sup>	Max~Min	dB(A)	35~22		41~28
Treated air volume <sup>1</sup>	Max~Min	m <sup>3</sup> /h	576~405			604~400
	Diameter of the connections		Liquid/Gas	mm (inch)		6.35 (1/4") / 12.7 (1/2")
		Condensate	mm		32	
<b>Accessories</b>						
Decorative panel			TFP 155 XRV-P			
Panel dimensions		LxHxD	647x50x647			
Net weight		Kg	2.5			
Remote control			DHIR-5-6-XRV-K-P			
Wired control			DHW-5-6-XRV-P			

1. Values relating to the Max and Min speeds of 7 levels that can be set by remote control.

# HTBU XRV-P

## 8-way cassette 84x84



Optimized fan design to  
attenuate air resistance and  
reduce sound level

**Predisposition for the  
connection of a duct  
for the introduction of  
external air**

Condensate drainage  
pump with the possibility of  
raising the drain up to 750  
mm from the lower level

**The controller must  
be purchased as an  
accessory**

Model			HTBU 565 XRV-P	HTBU 715 XRV-P	HTBU 905 XRV-P	HTBU 1125 XRV-P	HTBU 1405 XRV-P
Rated capacity	Cooling	kW	5.60	7.10	9.00	11.20	14.00
	Heating	kW	6.30	8.00	10.00	12.50	16.00
<b>Electrical data</b>							
Power supply		Ph-V-Hz	1-220~240V-50Hz				
Absorbed power		W	31	46	75		94
<b>Product specifications</b>							
Dimensions		LxHxD	840x230x840		840x300x840		
Net weight		Kg	23.2		28.4		30.7
Sound power level <sup>1</sup>	Max~Min	dB(A)	56~47	58~47	61~50		64~52
	Sound pressure level at 1.4 m <sup>1</sup>	Max~Min	dB(A)	43~34	45~34	47~36	
Treated air volume <sup>1</sup>	Max~Min	m <sup>3</sup> /h	1029~704	1200~748	1596~1034		1727~1224
	Diameter of the connections		Liquid/Gas	mm (inch)		9.52 (3/8") / 15.9 (5/8")	
		Condensate	mm		32		
<b>Accessories</b>							
Decorative panel			TBP 712 IHXR				
Panel dimensions		LxHxD	950x70x950				
Net weight		Kg	5.8				
Remote control			DHIR-5-6-XRV-K-P				
Wired control			DHW-5-6-XRV-P				

1. Values relating to the Max and Min speeds of 7 levels that can be set by remote control.